

Anti Collision-System

Prachi Bhardwaj

Computer Science
Dronacharya College of Engineering
Gurgaon, India
prachi.17182@ggnindia.dronacharya.info

Aishwarya Aggarwal

Computer Science
Dronacharya College of Engineering
Gurgaon, India
aishwarya.17008@ggnindia.dronacharya.info

Mrs Jyoti Pruthi

Asst Prof., Computer Science Department
Dronacharya College of Engineering
Gurgaon, India
jyoti.pruthi@ggnindia.dronacharya.info

Dr. Neelam Ruhil

Department of computer Science & Engineering
Dronacharya College of Engineering
Gurgaon, India
hodcse@ggnindia.dronacharya.info

Ms. Ashima

Lenskart Organisation
ashima112cs04@gmail.com

Chetna Singh

Computer Science
Dronacharya College of Engineering
Gurgaon, India
chetnasingh1006@gmail.com

Abstract-Electromagnetic anti-collision de vice is made in order to avoid vehicle collision or head/back collision that estimate the space between the two vehicles or between vehicles or object. Space between two id find out by the help of ultrasonic range finder. The vehicles collision is a major problem in the last decades the vehicles is used in very high number. So, to avoid the accidents anti-collision is too much beneficial.

Keywords: ultrasonic range, Electromagnetic anti-collision

I. INTRODUCTION

Safety is that necessary a part of life, as a result of accident cases report daily on the main roads all told components of the developing countries and states. Recently studies show that nearly 65% of roads accidents are often avoided if the driving force was warned only one 0.5 seconds before when the collisions happens with any vehicle or object. The primary demonstration of forward collision shunning was performed in 1995 by a team of scientists and engineers at Hughes analysis Laboratories in Malibu, California. The project was funded by Delco natural philosophy, and was crystal rectifier by HRL scientist Ross D. Olney. The technology was labelled for promoting functions as "Forewarn". The system was radio detection and ranging based mostly - a technology that was promptly offered at Hughes natural philosophy, however not commercially elsewhere.

Since number of vehicles are increasing and its proportionately accidents are also increasing on daily basis. These accidents square measure principally caused by the delay of the driving force by hitting the brake. to stop the accidents caused by this hold up, supersonic decelerate organization is employed in vehicles. The most target of the supersonic decelerate system is that, cars have to be compelled to automatically brake once the detectors get to know about the danger. This can be a method for vehicles to be aware of associate in nursing close forward collision with associate insuring other vehicle or an obstacle and to brake the automotive consequently, that is finished by the decelerate circuit. It consists of more than one one supersonic detectors namely supersonic wave electrode and supersonic wave receiver. The supersonic wave electrode provided before

portion of associate in nursing automatic decelerate automotive, manufacturing and emitting supersonic waves during a preset space before the automotive.

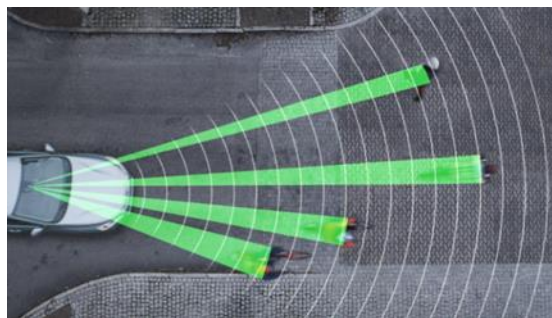


Fig. 1.

II. PRINCIPAL ELEMENTS OF UNBERABLE DECELERATE SYSTEM.

A. DETECTOR

A tool is academic degree tool that maps academic degree framework attribute to a significant activity. Each tool relies on the principle of transduction that's conversion of energy from one sort to a special sort. There unit a pair of important terms related to any tool -

- *Goal attitude* - It refers back to the 'slant response' restrictions of a given device. Given that the infrasonic waves reflect off the principal object, objective angles specify applicable amount of angle for a given software
- *Ray unfold* - It refers back to the most important forked unfold of the infrasonic waves as they go away the software

B. ELECTRNOIC TOOLS

A tool is an academic degree energy transforming tool that changes one style of energy into another. At intervals, the unperceivable detectors they are accustomed convert voltage

into unperceivable energy and in reverse throughout this method electricity transducers unit used, that turn out unperceivable vibration through utilization of power materials like beyond any doubt sorts of costly stones or ornamental polymers. Their operation based on the power. This result implies to the force made between surfaces of a hard, (non-main fabric) once a mechanical consternation is hooked up to it. On the other hand, it experiences a vigorous mechanical contortion and it displays a strong power over the surfaces when it connected to the voltage.

C. UNPERCEIVABLE TOOLS

Ultrasonic travel associate degree police investigation tools use sound waves in high amount cited as unhearable signals by observing the presence of a materials and its vary. Ancient frequency vary of human ear is approx. 20Hz to twenty thousand Hz. Unperceivable acoustic waves unit more than the vary of human ear, and so have frequency more than twenty thousand Hz. associate degree unhearable tool basically required a tool for turning of one form of energy to another energy, a covering insertion the unperceivable tool associate degree an electrical affiliation. These detectors unit are based on two components:

- *Unperceivable Transmitter* – Previously, the transmission of the unperceivable wave, a tool is required to urge the unhearable waves. A tool is given a sign to intermittently prove unperceivable waves. at the instant, the unperceivable transmitter sends the waves at an arranged separation forward. the chief fluctuate that impediment are recognized relies on upon the shift of unperceivable indicators utilized.
- *Unperceivable Receiver* – In the event that the unperceivable signals differ the impediment, it will demonstrate a reflected vibration. scholarly degree unperceivable beneficiary becomes usable for accepting the unperceivable signals reflected from the impediment. They got unperceivable wave is reawakened into a turnout signal with the cooperation of a device. The flag is opened up by scholastic degree gear (performance enhancer). The intensified flag is distincted and, the reference flag sight the parts in increased flag because of snags out

D. OPERATIVE EQUIPMENT AND ANALOG TO DIGITAL CONVERTER

Operative equipment, may be a high select up voltage hardware with different information assets and one yield. The upgrader's distinct sources of info carry a rearranging enter and a non-modifying enter. The operation amp opens up by myself the brilliance at interims the power among the two sources of data alluded to in light of the reality that the 'distinct statistics power'. The output power of the operative amp is regulated by bolstering a small quantity of output returned to the reversing enter. Generally, often alluded to as complaint. As an aftereffect of the intensifier's high choose up, the outputpower for any given statistics is sincerely regulated through the input. Thespread-out flag can be a sq. heartbeat

this is given to the ADC. It changes over info simple flag to comparing computerized flag. The computerized flag is given to the μ controller . An electrical instrument is relate degree vitality change device that proselytes one assortment of vitality into another. Inside the unhearable indicators they're acclimated change over power into unhearable vitalityand the alternative way around. amid this structure energy converter square measure used, that create unhearable trembling through usage of energy substantial like certain assortments of valuable stones or earthenware polymers. Their operating relies at the energy. This effect implies to the power made among surfaces of a robust, as soon as automatic suspension is attached to that. then again, once an energy is attached diagonally on top of surfaces of a sturdy that suggests power, the sturdy reports mechanical mutilation.

E. DECELERATE CYCLE –

The organized/the intensified automatic flag is disseminated to the decelerate cycle.

• *Percent (Peripheral Interface Controller)* – The μ controller applied is percent 16F84 this is 8-bit μ controller. Percent μ controllers vicinity unit made through semiconductor unit alteration. Photographs territory unit used in this approach as an aftereffect of their low esteem and vast possibility. The quantities of bearings to play out an expansion of activity fluctuate from thirty-five headings in low-stop pix to regarding seventy bearings in pinnacle of the line snap shots. it's changed by utilizing abuse C dialect [4]. The banner from the ADC is prepared by method for the percent μ controller, which offers a precept as a yield, upheld the country of the banner, to the servo motor. The banner was given from the ADC is besides respected at the lcd show (which gives a various media deliberation on the windscreen inside the driving force's area of view), and it offers the crevice among the the front of the car and therefore the problem [1]. the crevice value at that programmed decelerate have to begin is as of now cling on within the μ controller. once the planned separation achieves this value, the percent robotically circulates the flag to the servo engine that gradually controls slow down through mechanical publications of motion. There area unit 2 cases that occur in proper status:

1. the space among the frontal automobile moreover the driving force's automobile is route enough to defend bally, moreover the self-velocity is that similar to rate of frontal car. Amid this situation, the motive force's car continues on running even as no longer continually converting its price.

2. Every other case is that the gap among the the frontal motor and motive force's car is a littler sum than the predefined secure separation at that fee. At that point the auto-slow down framework coercively decreases the rate of the driving force's car and in the long run the car blocks to stop a mischance

III. CONCLUSION

The paper well-knownshows the usage of an unhearable computerized slow down machine ahead Collision brushing off with speeding up pedal disengagement technique, expected

to apply in vehicles wherever the drivers may not no longer brake substantial, but rather the speed of the vehicle will be diminished routinely as an aftereffect of the detecting of the impediments. The unhearable indicators quarter unit less highly-priced moreover the framework carries of a much less tough to thrill hardware. The relative velocity of the automobile with connection to the obstruction is measurable abuse sequential as of the gap figured. it is used time to time as structure computes the pastime at the brakes, to control the velocity so that it will maintain a protected disjoint to prevent misadventure. This problem, consisting of the plain fact of decrease rate and manipulate usage of unhearable signs, may also inspire the applying and setting of the hypothesis in numerous low-end motors, so helping help safety and give an inconvenience loose using mastery at a faded value. With the succeeding evaluation and exam, we have a tendency to form framework into a respectable a splendid deal of cutting area velocity gadget for car security, though understanding this truthfully wishes a substantial degree of labor and adapting, much the same as the programming and operation of μ controllers moreover the auto structure. we have a propensity to consider that the fuse of the fuel pedal separation instrument can increase protection and conjointly provide such framework a notably greater marketplace house and a competitive gravitate towards the marketplace.

The anticipated framework indicates distinct levels:

a. The essential stage is that the fast operation, better than 85km/hr. Amid the case the security area, it need to be saved up within the center of the motor furthermore the snag is taken into consideration as 5 meter. Alongside those strains, whenever the locators see a deterrent or automobile inner side vary the brake is hooked up automatically furthermore the speed is diminished. Since the drawback is shifting without cease the idea process compel will extend velocity physically.

b. Any other degree is that the medium velocity activity, is among sixty km/hr and ninety km/hr. Amid this situation the safety space that ought to be saved up within the middle of the

car furthermore the challenge is taken into consideration as 4 meter. Along these strains, whenever the locators see some snag or car inner this variation, the speed is robotically dwindled.

c. The 1/3 level is that the low pace activity, between 31km/hr and 59km/hr(approx). Amid this example the security separate that have to be kept up inside the middle of the automobile and on this way the deterrent is considered as multiple meter. Therefore, if the indicators discover some restriction or automobile inner this fluctuate, the speed is routinely discounted.

d. The last degree is that the appallingly low velocity force, underneath thirty km/hr. Amid this example the safety place that ought to be kept up in the center of the car and alongside these traces the difficulty is taken into consideration as one meter. Alongside those strains, if the identifiers discover some snag or automobile inside this vary, the speed is automatically faded

REFERENCE

- [1] G.V.Sairam, B.Suresh, CH.Sai Hemanth and K.Krishna Sai, "Intelligent mechatronic decelerate system", International Journal of rising Technology and Advanced Engineering, ISSN 2250-2459, ISO 9001:2008 Certified Journal, Volume 3, Issue 4, April 13
- [2] Eung Soo Kim, "Fabrication of automobile decelerate system for pre-crash system exploitation detectors", International Journal of management and Automation, Volume 2, No. 1, March 2009
- [3] Dhanya K R and Mrs R Jeyanthi, "Advanced automatic decelerate system with tool fusion concept", International Journal of rising trends in Engineering and Development, ISSN 2249-6149, Issue 2, Volume three (April 2012)
- [4] Mohd Shahrizan B. Sahri, "Ultrasonic automobile decelerate systems", University of Malaysia, Pahang.
- [5] [5] C.Grover, I Knight, F Okoro, I Simmons, Cooper, P Massie, B Smith (TRL Limited), "Automated emergency decelerate systems: Technical necessities, prices and benefits", revealed Project Report PPR 227, Version: 1.1
- [6] [6] Shival Dubey and Abdul Wahid Ansari, "Design and development of car anti-collision system exploitation magnetand supersonic detectors ", University of rock oil and Energy Studies, India.