

# RFID BASED COMPUTERIZED BILLING TROLLEY

## **Abhimanyu Srivastava**

abhimanyusrivastava775@gmail.com  
Department of Electronics and Computer  
Engineering  
Dronacharya college of Engineering,  
Gurgaon, Haryana, India

## **Kiran Nagar**

Kirannagar93@gmail.com  
Department of Electronics and  
Computer Engineering  
Dronacharya college of  
Engineering, Gurgaon,  
Haryana, India

## **Udit Narayan Tripathy**

udittripathy80@gmail.com  
Department of Electronics and  
Computer Engineering  
Dronacharya college of  
Engineering, Gurgaon, Haryana,  
India

## **Poonam Yadav**

[yadavpoonam782@gmail.com](mailto:yadavpoonam782@gmail.com)  
Department of Electronics and Computer  
Engineering  
Dronacharya college of Engineering, Gurgaon,  
Haryana, India

## **Rajesh Ruhil**

rajeshruhil@gmail.com  
Global Logic Pvt.Ltd, Noida

**Abstract** — These days looking for and shopping for at massive department stores is becoming a everyday hobby in metro towns. We're able to see massive rush at branch stores on vacations and weekends. Clients purchase unique items and placed them in trolley. at the billing counter the cashier prepare the bill the use of bar code reader that could be a time consuming method and outcomes in prolonged queues at billing counters. Our cause is to growth a gadget that may be implemented in buying stores to remedy the above cited challenge. The circuit may be positioned within the trolley with RFID reader connected to it. All the products inside the buying centre could be organized with RFID tags. At the same time as someone places any product inside the trolley, its code is probably detected and the rate of those merchandise can be displayed on the lcd that is there on the trolley. Concurrently the facts may be transmitted via ZigBee module (CC2500). there can be a receiver section at the invoice table element wherein a ZigBee receiver module is mounted with the gadget in which the invoice want to be paid .As we placed the goods, the rate may be added to traditional invoice. As a end result the billing might be stored or stored within the system.

**Key phrases**— grocery keep, Bar code Scanner, Sensor, automatic Product identity; virtual services; Grocery shops, wise cart, RFID

## I. ADVENT

These days shape of massive as well as small shopping branch stores has advanced throughout the worldwide due to growing public call for & spending. Every so often customers have problems regarding the incomplete information about the product on sale and waste of unnecessary time at the billing counters. Non-prevent improvement is wanted inside the conventional billing system to beautify the fantastic of purchasing revel in to the clients. to triumph over those troubles stated above and to beautify the existing device, we've got have been given designed a clever TROLLEY the usage of RFID. This could be carried out with the aid of virtually attaching RFID tags to the products and a RFID reader with a liquid crystal show at the shopping for trolley. With this tool patron should have the statistics approximately price of each item which can be scanned in, popular charge of the object and additionally quick approximately the product. This device will preserve time of customers and manpower required in mall and price related to the product. In cutting-edge-day years a deep structural exchange has passed off, with effects on financial growth and society, specifically in factors collectively with territorial profession, urbanization, openness to global markets, demography, circle of relatives systems and cultural and ingesting patterns. Innovation in communicate



# RFID BASED COMPUTERIZED BILLING TROLLEY

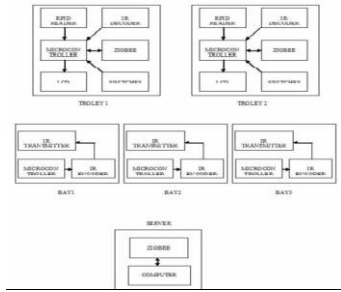


Fig.2. Block diagram of smart shopping for cart

### III. PRESENT TECHNIQUE

Presently to be had technique in shopping for stores is barcode approach. On this technique there are barcode labels on each product which may be test via especially designed barcode readers. A barcode reader (or barcode scanner) is a digital device for studying posted barcodes. Like a flatbed scanner, it includes a moderate deliver, a lens and a slight sensor translating optical impulses into electrical ones. Moreover, nearly all barcode readers include decoder circuitry reading the barcode's picture facts provided by way of the usage of the sensor and sending the barcode's content material fabric to the scanner's output port.

### IV. DRAWBACKS OF MODERN GUIDE DEVICE

- The present day-day manual system has quite some paper paintings and it does no longer have information of buy and sale.
- To preserve the facts of sale and company manually, is a time-eating hobby.
- With the boom in database, it will become a large manner to maintain the database.
- calls for big portions of file shelves, which is probably large and require quite a chunk of vicinity in the place of job, which can be used for storing facts of previous facts.
- The retrieval of facts of previously registered sufferers will be a tedious activity.
- *Loss of protection for the records, absolutely all people disarrange the information of your tool.*
- If a person need to test the statistics of the to be had clinical docs the preceding tool does now not offer any crucial element of this type.

### V. PROPOSED TECHNIQUE

If in assessment, RFID generation is positioned to be more complete than barcode generation. It's miles feasible to read RFID tags from a more distance. An RFID reader can

get proper of access to the facts of the tag from a distance of spherical 3 hundred toes, while barcode era cannot be have a look at from a distance of greater than 15 ft. RFID technology moreover rankings over barcode technology in phrases of pace. RFID tags can be interpreted a exceptional deal faster than barcode tags. Barcode reading is rather slower because it calls for a proper away line of sight. On a median, a barcode reader takes round one 2nd to efficaciously interpret tags, whilst within the equal time the RFID reader can interpret round 40 tags. RFID tags are well covered or both implanted within the product, and as a cease end result isn't always subjected an excessive amount of positioned on and tear. Interpreting a barcode requires an instantaneous line of sight to the posted barcode, because of which the barcode is outlined at the outer component of the product, and is for this reason subjected to more put on and tear. It moreover limits the re-utilization of barcodes. As barcode lacks have a look at and write facility, it isn't always viable to characteristic to the information already modern on it. Then again rewritten on RFID tags is possible.

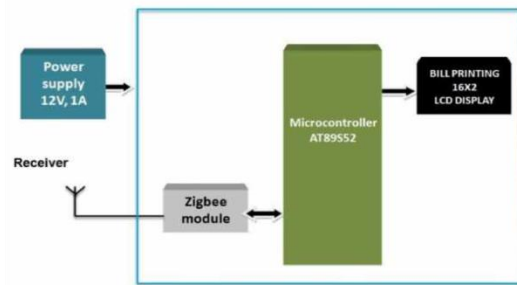


Fig.3. Block Diagram of transmitter

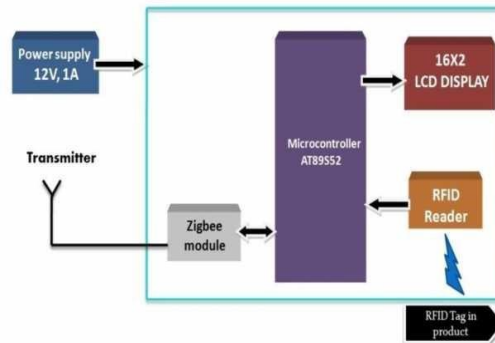


Fig.4 Block Diagram of receiver

### VI. RESEARCH AND EVALUATION

The software of trolley is probably first of its kind for industrial use. This device facts the statistics of the perfect merchandise with assist of the right sensors like RFID Tags. This recorded records allows the shop proprietor with unique

evaluation of buying by using way of the client & their options through the pc; printout of the equal may be obtained.

### ZIGBEE

ZigBee is an IEEE 802.15.4-based totally specification for a fixed of excessive-diploma communication protocols used to create non-public place networks with small, low-power virtual radios. The era defined via the ZigBee specification is meant to be simpler and plenty tons much less costly than specific Wi-Fi non-public place networks (WPANs), which include Bluetooth or Wi-Fi. packages encompass wireless mild switches, electric powered meters with in-home-suggests, website online traffic control structures, and awesome consumer and industrial tool that calls for quick-variety low-fee wireless statistics switch. Its low energy consumption limits transmission distances to ten–a hundred meters line-of-sight, depending on electricity output and environmental trends. ZigBee gadgets can transmit records over prolonged distances by the usage of passing facts via a mesh community of intermediate gadgets to accumulate greater faraway ones. ZigBee is normally utilized in low data fee applications that require lengthy battery life and cozy networking (ZigBee networks are secured thru 128 bit symmetric encryption keys.) ZigBee has a described rate of 250 Kbit/s, extraordinary suitable for intermittent facts transmissions from a sensor or input device. ZigBee have become conceived in 1998, standardized in 2003, and revised in 2006. The decision refers to the waggle dance of honey bees after their skip once more to the beehive.

868 MHz in Europe and 915 MHz within the USA and Australia. Information fees variety from 20 Kbit/s (868 MHz band) to 250 Kbit/s (2.4 GHz band). The ZigBee network layer natively helps every film superstar and tree networks, and traditional mesh networking. Every network have to have one coordinator device, tasked with its introduction, the manipulation of its parameters and easy safety. Inside massive name networks, the coordinator should be the important node. Both timber and meshes permit the usage of ZigBee routers to increase communication at the network level. ZigBee builds at the bodily layer and media get right of access to control described in IEEE large 802.15.4 for low-rate WPANs. The specification includes four extra key components: network layer, software layer, ZigBee tool gadgets (ZDOs) and manufacturer-described software program objects which permit for customization and need overall integration. ZDOs are accountable for a few responsibilities, which consist of preserving song of tool roles, coping with requests to join a community, similarly to tool discovery and protection. ZigBee is one of the global standards of conversation protocol formulated through the large challenge pressure under the IEEE 802.15 taking walks organization. The fourth in the series, WPAN Low rate/ZigBee is the maximum updated and gives specs for devices that have low facts prices, consume very low power and are therefore characterized via lengthy battery lifestyles. Precise requirements like Bluetooth and IrDA deal with excessive information fee applications together with voice, video and LAN communications.

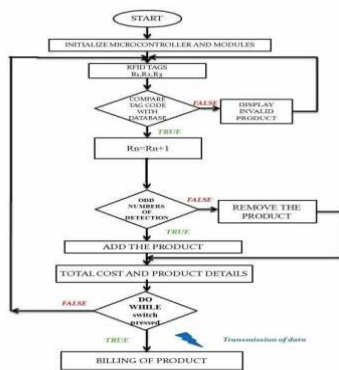


Fig.5. Tool flow Diagram

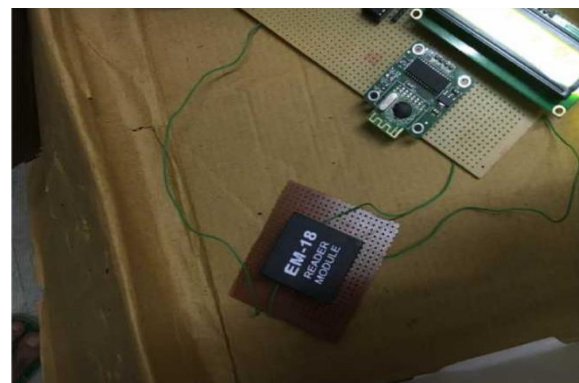


Fig.6. RFID module

### VII. EVALUATION

ZigBee is a low-charge, low-energy, Wi-Fi mesh community famous focused on the massive development of extended battery life devices in Wi-Fi control and monitoring packages. ZigBee gadgets have low latency, which similarly reduces common cutting-edge. ZigBee chips are commonly protected with radios and with microcontrollers that have among 60-256 KB of flash memory. ZigBee operates within the industrial, clinical and medical (ISM) radio bands: 2.4 GHz in most jurisdictions worldwide; 784 MHz in China,

### VIII. CONCLUSION

The supposed dreams had been effectively finished within the prototype version advanced. The superior product is straightforward to use, low-value and does not want any particular training. This mission document critiques and exploits the prevailing traits and first-rate sorts of radio frequency identification generation which can be used for product identification, billing, and lots of others. We've moreover determined out the shape of the device that can be used inside the looking for systems for smart and easy searching for within the shops to maintain time, power and

coins of the clients. Present dispositions detail in the direction of the short boom of RFID in the next decade. With round six hundred million RFID tags furnished within the 12 months 2005 on my own, price of market which consist of systems, services and hardware might be to growth through trouble of 10 among years 2006 -2016. It's far expected that brand new sizeable style of RFID tags introduced within the year 2016 might be spherical 450 instances in assessment to those added within the 3 hundred and sixty 5 days 2006. This challenge opinions and exploits the prevailing trends and specific kinds of radio frequency identity era which might be used for product identity, billing, and so forth. Because of this the survey paper research and evaluates studies perception in Radio Frequency identification systems from a large photo first. we've were given studied in detail about the agency model, technological version and all associated work and applications within the domain of RFID based systems that make ease of identity. We've have been given moreover located the form of the machine that may be used inside the trying to find systems for clever and easy buying within the stores to keep time, electricity and coins of the clients. Because of this RFID has a huge scope in the deliver chain manage. within the future, if all research are favorable, we are capable of expand with the implementation of a prototype for proposed shape for finding out in a actual hypermarket situation because of the truth RFID is a generation that has the functionality to decorate our lives to a very exquisite quantity. The RFID technology can be considered no longer in reality clean accomplishment of a few studies, however an inexperienced answer for agencies, if you need to decide visibility on developing the enterprise strategies in a correct manner and of whole transparency. The clever buying machine can notably trade the manner in which buying is finished, ultimately easing the lifestyles of clients, continually confronting with time. The retail supermarkets of the future will present substantially an awful lot less checking queues, to be able to growth the very own services and people of the employees, inner steps of inexperienced performing of sports activities unique to shopping for. An RFID implementation that assumes in the meantime big charges turns into approachable within the destiny. In masses of programs, the first-rate rate of RFID technology may be balanced out thru the success of the incredible solution and results of issues. The supposed dreams were correctly executed within the prototype version evolved. The evolved product is simple to apply, least costly and does no longer require any precise schooling. Although the venture showcases the evidence of concept, there are a few factors that can be protected to make the smart shopping cart greater sturdy. First of all, in this project the latency time of the wireless conversation with the server can also moreover want to be taken into consideration. Secondly, the conversation isn't always very comfortable. Every exclusive ZigBee module jogging on the equal frequency can without problems intercept the transmitted facts. This trouble will want to be resolved in particular with apprehend to billing to sell purchaser self-perception. similarly, a more ultra-

cutting-edge micro-controller and huge display device may be used to offer higher consumer revel in. via way of this paper we cause to simplify the billing machine, make it brief & increase the protection the usage of RFID method. This may take the overall seeking out experience to a one-of-a-type diploma.

Precise parameters which include the tool parameters of clever trolley like products name, merchandise price, product weight and so forth continuously shown:

Therefore with the help of the perception we are able to say that-

1. Automated billing of merchandise with the beneficial useful resource of the usage of RFID approach can be a more viable preference inside the destiny.

2. The device based totally mostly on RFID approach is green, compact and indicates promising common performance.

## REFERENCES

- [1] Manage idea informatics ISSN 2224-5774(Print) Issn2225-0492(on line), Vol1, No1,2011 Rfid based totally automated purchasing Cart Saurabh Kumar Sultaina, Gaurav Jaiswal, Prateek Jain
- [2] international conference On Computing And control Engineering (Iccce2012), 12&13 April, 2012 smart looking for enjoy based totally on RFID, Vanitha
- [3] The 7th global convention On Sensor generation &packages smart shopping Cart For computerized Billing purpose the usage of wireless Sensor Networks, Sanchita Roy, Udita Gangwal,Jyotsna Bapat.
- [4] IEEE Antennas & Propagation mag, 48, 2006, Pp: 212-218 precept And Propagation Magazine, 48, 2006, Pp: 212-218, concept and duration of again Scattering From Rfid Tags, P.V.Nikitin, ok.V.S. Rao.
- [5] Measurement, Vol.40 4, No.4, Pp.730-737, April 2011 Threshold-based honestly identity of Wi-Fi discovered Rfid Tags with Pulse function Encoding, G.Cerda-Villafana & Y.S.Shmaliy.
- [6] Rfid mag, 2002-2007, Refferd 6.8.2007, to be had [Http://www.Rfidjournal.Com](http://www.rfidjournal.com).
- [7] proceeding Of The 2004 IEEE global convention Networking, Sensing & manage, 2004 cell Healthcare offerings tool the use of Rfid, L-Cheng-Ju, L.Li, C.ShiZong, W.Chi Chen, H.Chun-Huang & C.Xin-Mei.
- [8] IEEE Transactions On tool, man &Cybernetics-issue C: applications reviews, Vol.forty, March 2012 unmarried Rfid Tag possession switch Protocols Gaurav Kapoor &Selyn Piramuthu.
- [9] IPSI magazine, Vol.forty, No.eight, Pp.846-859, August 1999. Putting statistics To subjects: Rfid Tags their packages, Siio, I, Hayasaka, T.
- [10] Dr. Suryaprasad J, Praveen Kumar B O, Roopa D & Arjun A ok "a completely unique Low-fee smart purchasing for Cart", 2014 IEEE.
- [11] Amine Karmouche, Yassine Salih-Alj, "Aisle-diploma Scanning for Pervasive RFID-based buying packages", 2013 IEEE.
- [12] Martin Mayer, Nobert Gortz and Jelena Kaitovic, "RFID Tag Acquisition via Compressed Sensing", 2014 IEEE.
- [13] Satish Kamble, Sachin Meshram, Rahul Thokal & Roshan Gakre, "developing a Multitasking buying Trolley based totally totally totally on RFID generation", January 2014 global magazine of gentle Computing and Engineering (IJSCE).
- [14] Mr. P. Chandrasekhar, Ms. T. Sangeetha, "smart purchasing for Cart with automated vital Billing tool thru RFID and ZigBee", 2014 IEEE.

- [15] Zeeshan Ali, Reena Sonkusare, "RFID based definitely truly clever buying and Billing", international magazine of advanced studies in computer and conversation Engineering Vol. 2, difficulty 12, December 2013.
- [16] D. Hahnel, W. Burgard, D. Fox ok. Fishkin and M. Philipose, "Mapping and localization with RFID generation", Proc. IEEE Int. Conf robotic. Autom, pp.1015 -1020 2004.
- [17] C. Buragohain, D. Agrawal, and S. Suri. Distributed navigation algorithms for sensor networks. In IEEE INFOCOM, 2006